

Review

The endocannabinoid system in cancer—Potential therapeutic target?

Jenny Flygare, Birgitta Sander*

Department of Laboratory Medicine, Division of Pathology, F46, Karolinska Institutet and Karolinska University Hospital Huddinge, SE 141 86 Stockholm, Sweden

Abstract

Endogenous arachidonic acid metabolites with properties similar to compounds of *Cannabis sativa* Linnaeus, the so-called endocannabinoids, have effects on various types of cancer. Although endocannabinoids and synthetic cannabinoids may have pro-proliferative effects, predominantly inhibitory effects on tumor growth, angiogenesis, migration and metastasis have been described. Remarkably, these effects may be selective for the cancer cells, while normal cells and tissues are spared. Such apparent tumor cell selectivity makes the endocannabinoid system an attractive potential target for cancer therapy. In this review we discuss various means by which the endocannabinoid system may be targeted in cancer and the current knowledge considering the regulation of the endocannabinoid system in malignancy.

© 2007 Elsevier Ltd. All rights reserved.

Keywords: Endocannabinoid; Cannabinoid; Cancer; Lymphoma

Contents

1. Discovering the potential use of the endocannabinoid system in cancer	176
2. The various components of the endocannabinoid system	177
3. Targeting the enzymes that inactivate endocannabinoids as a means to increase the endogenous tumor control	178
4. Expression of endocannabinoids and cannabinoid receptors in cancer	178
5. Direct and indirect effects of cannabinoids on cancer: evidence for different mechanisms of action in different types of malignancies	179
6. Growth promoting effects by cannabinoids/endocannabinoids in cancer	183
7. Anti-cancer effects of the CB ₁ antagonist SR141716A	183
8. Effects independent of cannabinoid receptors in cancer	184
9. Selective effect of cannabinoids in cancer cells while normal cells are spared	184
10. Regulation of cannabinoid receptor expression in cancer	184
11. Targeting the endocannabinoid system in cancer—where are we today?	185
Acknowledgements	185
References	185

1. Discovering the potential use of the endocannabinoid system in cancer

The cannabinoid receptors and their endogenous ligands, the endocannabinoids, are expressed in mammalian tissue as well as in lower organisms such as invertebrates [1,2]. The highly conserved nature of the endocannabinoid system suggests

that it constitutes an important biological regulatory system. Still, the cannabinoid receptors and their first identified endogenous ligands, arachidonylethanolamide (anandamide, AEA) and 2-arachidonoylglycerol (2-AG), remained un-discovered until recently [3–7]. In mammals, the endocannabinoid system has effects on many organ systems and it regulates cardiovascular, nervous, digestive, metabolic, reproductive and immune functions [8,9]. Studies to date indicate that the endocannabinoid system usually has suppressive effects, exemplified by decreased contractility in the heart, vasorelaxation, neuroprotection in acute and chronic neurological conditions

* Corresponding author. Tel.: +46 8 58581044; fax: +46 8 58581020.
E-mail address: birgitta.sander@ki.se (B. Sander).

and anti-inflammatory effects. Both the CB₁ and the CB₂ genes encode seven-transmembrane G protein coupled receptors (reviewed in [10]). Initial studies suggested that CB₁ was expressed mainly in the central nervous system and CB₂ in the immune system. It soon became clear, however, that CB₁ receptors are expressed in most peripheral tissues including immune cells, albeit at lower levels than in CNS. Low levels of CB₂ have recently been detected in neuronal cells of the brain [11]. Putative other cannabinoid receptors have been suggested.

The natural plant cannabinoid, Δ -9-tetrahydrocannabinol (THC) was recognized as a potential anti-cancer agent already in 1975 [12]. However, it was not until the last 10–15 years that further studies in this area were carried out. Since then, there has been a great effort to investigate the therapeutic potential of cannabinoids in various types of cancer [13] and a first human clinical study has been performed [14]. Cannabinoids have been found to control cell growth and death in many cancer types but the mechanisms underlying the antitumor effects may vary and are sometimes cell type specific. Cannabinoids have been reported to cause heterogeneous effects in tumor cells, such as cell cycle alterations resulting in growth arrest, induction of apoptosis, anti-angiogenic activity and reduced migration. In some instances pro-proliferative effects of cannabinoids have been reported. Stimulation of cannabinoid receptors have been found to interfere with various intracellular signaling pathways and the efficacy of cannabinoids may be different in normal versus transformed cells.

2. The various components of the endocannabinoid system

The endocannabinoid system is commonly defined as the endocannabinoids together with their molecular targets and metabolizing enzymes.

In the early 1990s, the two seven-transmembrane G-protein coupled (GPCR) cannabinoid receptors, CB₁ [4,5] and CB₂ [7], were cloned. Based on their predominant expression in the central nervous system and in the peripheral immune system, CB₁ and CB₂ were initially denoted the central- and the peripheral cannabinoid receptor, respectively. It later became evident that CB₁ is also found at peripheral nerve terminals and in non-neuronal tissues, e.g. the pituitary gland, immune cells, vascular endothelium, eye, ileum and reproductive tissues [15,16], and that CB₂ is expressed also in the central nervous system [11]. However, the major role played by CB₁ is in inhibition of the release of neurotransmitters, whereas CB₂ mainly modulates functions of the immune system by regulating cell migration and cytokine release. Both cannabinoid receptors transmit signals via inhibition of adenylyl cyclase [17] and mitogen-activated protein kinases (MAPK) [18], whereas the neuromodulatory effect of CB₁ may be ascribed to inhibition of calcium channels [19] and activation of potassium channels [20]. In addition to their roles in neuromodulation and immune function, the cannabinoid receptors participate in the regulation of cell survival [21]. In this context, signaling via MAPK and phosphatidylinositol 3-kinase (PI3K)-AKT as well as generation of ceramide have been implicated [22].

The endocannabinoids were identified a few years after the cannabinoid receptors [23], the most well studied being the fatty acid amide AEA [3] and the monoacylglycerol 2-AG [6]. Both compounds are synthesized on demand from phospholipid precursors residing in the cell membrane in response to a rise in intracellular calcium levels, described in detail elsewhere [16]. Prior to its recognition as a ligand to cannabinoid receptors, 2-AG was known to act as an intermediate in various signaling pathways. 2-AG and AEA bind to CB₁ and CB₂ with similar affinities, but in a majority of investigations, 2-AG has been reported to display higher efficacy to CB₁ and CB₂ as compared to AEA [24]. Following release from the cells, AEA and 2-AG can act on molecular targets in an autocrine or paracrine manner, and are subsequently inactivated by cellular re-uptake. Different models of AEA transport including simple diffusion, endocytosis and transport mediated by a carrier protein have been discussed [25]. Properties of a putative AEA membrane transporter (AMT) have been described, although the molecular structure remains unknown [26].

Once inside the cell, the endocannabinoids are rapidly degraded. The major enzyme catalyzing the degradation of AEA is a fatty acid amide hydrolase (FAAH), which hydrolyzes AEA into arachidonic acid (AA) and ethanolamine (EA) (Fig. 1). 2-AG is converted into AA and glycerol by either FAAH or by the monoacylglycerol lipase MAGL (Fig. 1). Interestingly, biological activity of the degradation products has been reported. EA has been shown to protect neuroblastoma cells against apoptosis [27], and AA can be further metabolized to leukotrienes and prostaglandins with important roles in carcinogenesis, as reviewed in [28]. Other enzymes can, depending on the cellular context, contribute to the metabolism of AEA and 2-AG.

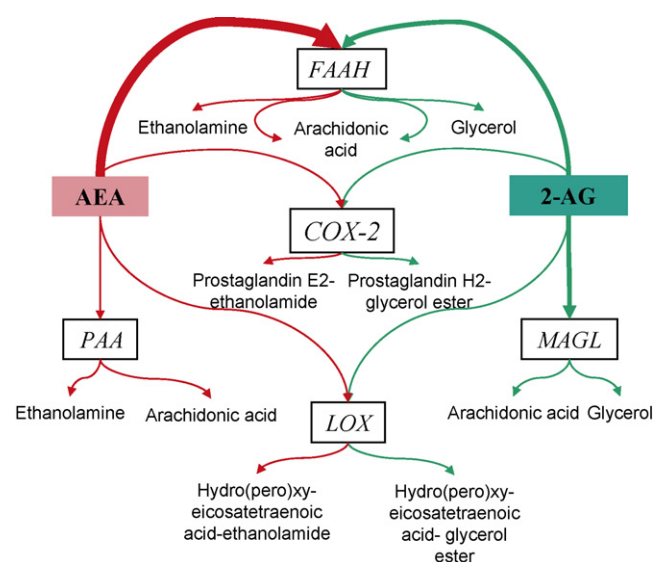


Fig. 1. Endocannabinoid metabolism. Fatty acid amide hydrolase (FAAH), cyclooxygenase-2 (COX-2) and lipoxygenases (LOXs) can use both *N*-arachidonylethanolamide (AEA) and 2-arachidonoylglycerol (2-AG) as substrates, while palmitoylethanolamide-preferring acid amidase (PAA) and 2-arachidonoylglycerol monoacylglycerol lipase (MAGL) can metabolize AEA and 2-AG, respectively. As indicated by the width of the arrows, FAAH is the major enzyme degrading AEA, while FAAH and MAGL are of equal importance for the degradation of 2-AG.

While palmitoylethanolamide-preferring acid amidase (PAA) can process AEA, cyclooxygenase-2 (COX-2) and lipoxygenases (LOXs) can use both AEA and 2-AG as substrates (Fig. 1) [29]. The possibility has been raised that some of the metabolites generated by these enzymes could act as novel signal mediators.

In addition to cannabinoid receptors, the vanilloid receptor type 1 (transient receptor potential vanilloid 1, TRPV1) is well established as a target for AEA, while other receptors, e.g. peroxisome proliferator-activated receptor γ (PPAR γ), the GPR55 orphan receptor and unidentified receptors have also been suggested [16,24]. AEA can also act as a modulator of other signalling pathways; allosteric sites for AEA are present on muscarinic and glutamate receptors.

Lipid mediators other than AEA and 2-AG, e.g. 2-arachidonoyl-ether (noladin ether), *O*-arachidonoyl-ethanolamine (virodhamine) and *N*-arachidonoyldopamine (NADA) have been reported to bind to CB₁ and CB₂, although the biological significance remains to be further investigated [30]. To add complexity, several endogenous, pharmacologically active fatty acid derivatives that do not bind to CB₁ and CB₂ can potentiate the activity of AEA and 2-AG, either by inhibiting the uptake or metabolism or by acting as substrates to the enzymes involved in transport or degradation [16].

3. Targeting the enzymes that inactivate endocannabinoids as a means to increase the endogenous tumor control

Endocannabinoids are produced by many cell types and their levels can be higher in cancer and pre-malignant conditions than in the surrounding normal tissue. The concentrations of the endocannabinoid AEA is approximately 75 nM in normal colon tissue and increases two- to three-fold upon malignant transformation

[31]. In cell lines AEA and 2-AG levels are 40–200 nM [31], well in the range of activation of CB receptors [32]. However, cellular uptake of endocannabinoids is very rapid *in vivo* and *in vitro* [31]. Attempts have been made to increase the local concentration of endocannabinoids at the tumor cell surface by blocking endocannabinoid transport and the inactivating enzymes FAAH and MAGL. In this way anti-tumor effects of CB-receptor signaling have been induced in various cancer types such as thyroid, brain and prostate cancer [33–37]. In a xenograft model of thyroid cancer, substances that block endocannabinoid degradation increased levels of AEA and 2-AG in tissue and reduced tumor growth [33]. In prostate cancer cell lines, mainly effects on migration *in vitro* were reported [35–37]. These substances may however, have un-specific side-effects. In glioma and in lymphoma cells the AEA transport inhibitor VDM11 was found to have undesirable toxic effects *per se* [34] (Stranneheim and Flygare un-published observations). Blocking of endocannabinoid metabolism may also have other, un-expected effects as described by Matas et al. [27]. In neuroblastoma cells the AEA metabolite EA was protective against apoptosis induced by low serum. In this model the FAAH inhibitor URB597 induced cell death not by increasing AEA signaling through CB receptors but by preventing the generation of EA [27]. It is therefore likely that antiproliferative effects of endocannabinoid transport- and hydrolysis inhibitors could reflect combinations of direct toxic effects on the cells, of increased cannabinoid signaling and effects mediated by cannabinoid metabolites.

4. Expression of endocannabinoids and cannabinoid receptors in cancer

In a variety of human disorders, increased levels of endocannabinoids have been shown to reduce the severity of

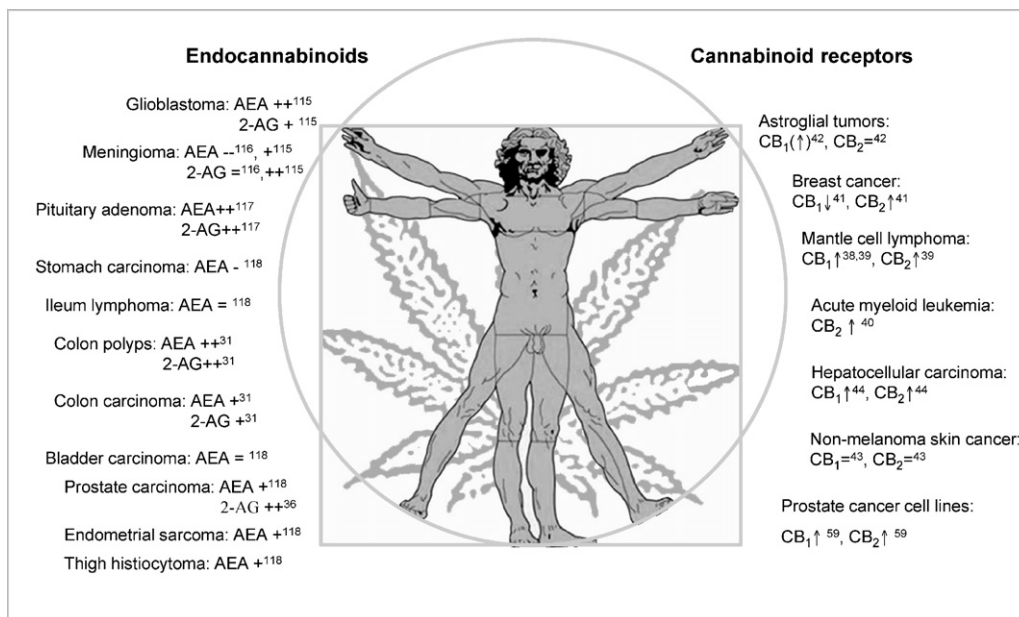


Fig. 2. Expression of endocannabinoids and cannabinoid receptors in cancer. Different cancer types showing altered expression of endocannabinoids or cannabinoid receptors as compared to the corresponding normal tissue = less than 1.5 × difference from control tissue, + or – more than 1.5 × difference from control tissue, ++ or – – more than 3 × difference from control tissue, ↑ up-regulated and (↑) marginally up-regulated compared to control tissue.

symptoms or even oppose disease progression [8–10,16]. Elevated levels of endocannabinoids have been reported in several different types of cancer as compared to their normal counterparts (Fig. 2), whereas decreased or only marginally changed levels were observed in others. Intriguingly, the levels of both AEA and 2-AG were higher in precancerous polyps than in fully developed carcinoma in colon [31]. The authors suggest a role of the endocannabinoids as potential endogenous tumor growth inhibitors.

There are numerous reports on the effects of cannabinoids on cell survival and tumor growth [13,15,22], but only a few investigations on the expression of CB₁ and CB₂ compared to normal tissue (Fig. 2). While increased expression of CB₁ and/or CB₂ has been reported in mantle cell lymphoma [38,39], acute myeloid leukemia [40], breast cancer [41], hepatocellular carcinoma and prostate cancer cell lines, the levels of both receptors were similar to control levels in astroglial tumors [42] and non-melanoma skin cancer [43]. Interestingly, high expression of CB₁ and CB₂ was detected by *in situ* hybridization in cirrhotic liver samples and in well-differentiated human hepatocellular carcinoma, while the expression in poorly differentiated hepatocellular carcinoma was low [44]. The expression of cannabinoid receptors in liver thus follows the same pattern as the expression of AEA and 2-AG in colon, as discussed above, raising the possibility that an up-regulation of the endocannabinoid system at an early stage in cancer development might act as a host defense suppressing development of cancer.

5. Direct and indirect effects of cannabinoids on cancer: evidence for different mechanisms of action in different types of malignancies

Exogenous cannabinoids (natural from plants or synthetic analogues) may target tumor cells directly via binding CB-receptors thus affecting signaling and cellular pathways that eventually induce growth arrest, cell death or inhibit migration. They can also act indirectly, via inhibition of angiogenesis or interference with the immune system. Table 1 summarizes a selection of experiments performed *in vitro* that have elucidated various mechanisms of action in different cancers. Since the efficacy of cannabinoids *in vitro* is dependent on the concentration of serum in the culture medium (usually with less potency at higher serum concentrations [45]) this variable is included in the table in order to facilitate comparison between different studies. The low serum concentrations used in some of the experiments may seem artificial, but can in fact mimic conditions in interstitial compartments in tumors where extracellular macromolecules can restrict the distribution of serum proteins [46]. Low serum concentrations may also induce oxidative stress in cells, thereby increasing the sensitivity to cannabinoids [47,48].

In brain tumors (mainly glioma including the highly malignant variant glioblastoma multiforme) cannabinoids induce cell death by stimulating ceramide synthesis *de novo*, resulting in a sustained ceramide accumulation, long-term up-regulation of ERK peaking on days 3–5 and apoptosis [49]. Antagonistic effects on growth factor induced proliferation has also been reported [42]. Usually, the effects are tumor selective, sparing

normal cells [50,51]. The effects have been further investigated using xenograft models where cannabinoids lead to growth inhibition of transplanted tumors [52–55]. A pilot clinical study of patients with glioblastoma multiforme has evaluated the safety of intracranial THC administration. Importantly, these tumors expressed CB receptors and remained sensitive to the pro-apoptotic effect of THC also after *in vivo* treatment [14].

Breast cancer may be dependent on hormones, such as estrogen and prolactin, for growth and survival. Many cultured breast cancer cell lines express prolactin receptors and are dependent on autocrine prolactin for pro-proliferative stimulation. In such cell-lines cannabinoids mainly induce growth arrest by down-regulating prolactin receptors [56]. Also pro-proliferative effects of exogenous prolactin was counteracted. Thus, breast-cancer proliferation depends on an autocrine prolactin loop and signaling through CB₁ has been shown to down-regulate the prolactin receptor and indirectly inhibit cell growth. Interestingly, these effects were also seen when FAAH was blocked, indicating that the cells produced endocannabinoids that could inhibit proliferation if present in adequate amount [56]. In further studies, anti-proliferative effects of cannabinoids mediated by down regulation of the high affinity NGF receptor Trk was demonstrated [57]. Cannabinoids have also been shown to inhibit breast cancer *in vivo* via acting on CB₁ [58].

Prostate cancer cell lines express higher levels of CB₁ and CB₂ than benign prostate epithelium [59]. Similarly to breast cancer, prostate cancer may express prolactin receptors and proliferate in response to prolactin and this response can be inhibited by cannabinoids [57]. Also the EGFR expression level can be down-modulated by cannabinoids, resulting in a CB₁ mediated inhibition of proliferation at day 3 and in massive cell death by apoptosis/necrosis at day 5, mediated through CB₁ and CB₂ [60]. Cannabinoids have also been reported to down-regulate the androgen receptor and prostate specific antigen (PSA) [61]. However, the sensitivity to cannabinoids seems to be quite variable in different prostate cancer cell lines even when they express CB-receptors [60,61,48].

Normal and transformed colon mucosa contain CB₁, CB₂ and FAAH [31] and most colon cancer cell lines also express both CB-receptors [62]. In a recent study it was reported that THC induce apoptosis by a CB₁ mediated effect, via dephosphorylation of ERK and AKT and activation of BAD [62], similar to findings in glioma [63] and in T cell lymphoma and leukemia [64]. However, the sensitivity to CB₁ versus CB₂ ligands might differ among colon cancer cell lines and during differentiation [31]. These tissues and cell lines also produce the endocannabinoids AEA and 2-AG, which are increased two- to three-folds in malignant tissue compared to normal [31]. Upon blockage of endocannabinoid inactivation the levels of AEA and 2-AG increased and the cell proliferation decreased. It was therefore suggested that endocannabinoids act as endogenous tumor growth inhibitors [31].

The CB₂ receptor was cloned from the human pro-myelocytic leukemia HL-60 [7]. Shortly thereafter it was found that a common retroviral integration site was located near the Cb2 locus in mice [65]. In spite of these highly interesting reports there is still very limited knowledge on the effects of cannabi-

Table 1 (Continued)

Cancer ^a	Agent	FCS	Effect in vitro	Receptor	Cycle arrest	Apopt	Growth factor	Angio	ER stress	Oxid stress	Ca ²⁺	PTX	cAMP/PKA	PI3/AKT	PKB	ERK	p38 MAPK	cer	COX-2	LOX	necr	Rafts	Reference	
Gastroint.	THC 1; WIN 0.1	Low	Anti-proliferative, pro-apoptic	CB ₁ , CB ₂	1	1								1									[52]	
	AEA 2.5; 2-AG 2.5; HU2101	N	Anti-proliferative	CB ₁ , CB ₂																			[31]	
	AEA 0.04; JWH133 0.01	0	Inhibition of migration	ND																			[125]	
	AEA 25, hydrolysis inhib	Low	Cell death	ND		0													1		0		[129]	
	AEA 0.1; MAEA 0.01; WIN 0.1; JWH 0.02	0	Stim. Of migration on plastic	CB ₁									1		1	1	1						[130]	
	THC 14 → 25; CBD 6–20	N	Anti-proliferative, pro-apoptotic	Variabl.							1CBD	1CBD											OCBD	[48]
Hemato	THC 10	0	Apoptosis	CB ₁		1								1		1							[62]	
	AEA10; 2-AG10n.e.	ND	Cell death by AEA (prolif by 2-AG)	Non-CB		1						0						1				1	[95]	
	THC 10	N	Differentiation	ND																			[131]	
	AEA 10	0	Pro-proliferative in synergy with GF	ND																			[81]	
	AEA 0.5; MAEA 0.5	0	Pro-proliferative in synergy with GF	Non-CB									0				1						[82]	
	AEA 10	0	Apoptosis	TRPV1#		1						1*											[93]	
	CP55,940 0.01–0.1	Low	Cytokine production, migration	CB ₂																			[66]	
	THC10; HU210 5	0	apoptosis	CB ₂																			[75]	
	2-AG 0.3	N	differentiation block	CB ₂										0	1		1	0					[132]	
	AEA 5; WIN 5	Low	Growth inhibition, reduced viability	ND			1																	[71]
	THC1.5; JWH13310	0	Apoptosis	CB ₂													0	1					[74]	
	MAEA 10; WIN 10	0	Apoptosis	CB ₁ , CB ₂													(1)	1	1					[72]
THC 1.5	0	Apoptosis	CB ₂																				[73]	
THC 10	N	Apoptosis	CB ₁ , CB ₂									1		0		1	0						[64]	
THC 14 → 25; CBD 6–20	N	Anti-prol. pro-apoptotic	Variabl.							1CBD	1CBD											OCBD	[48]	

^a Abbreviations: cancer: cancer type; agent: cannabinoid concentration in μM ; FCS: % fetal calf serum in culture medium, 0 = serum free, low $\leq 5\%$, N = 5% and higher; cycle arrest: cell cycle arrest; apopt: apoptosis; angio: angiogenesis; ER: endoplasmatic reticulum; oxid: oxidative; PTX: pertussis toxin; cer: ceramide; necr: necrosis; rafts: lipid rafts; ref: reference; THC: tetrahydrocannabinol; AA: arachidonic acid; PGE2: prostaglandin E2; WIN: WIN-55,212-2; MAEA: methanandamide; n.e.: no effect; CBD: cannabidiol; EGFR: epidermal growth factor receptor; pVEGFR: phosphorylated vascular endothelial growth factor receptor; prolac: prolactin; bFGF: basic fibroblast growth factor; NGF: nerve growth factor. Other symbols: # protective effect of CB-receptors; * cells without CB-receptors; 1 hi: at high dose.

noids in myeloid malignancies such as acute myeloid leukemia (AML), myelodysplastic syndromes (MDS) or myeloproliferative disorders. It has been reported that approximately 50% of primary AML express CB₂ [40]. There are also reported effects of cannabinoids on cell migration and production of cytokines from myeloid cell lines [66]. In contrast, the initial findings of CB₁ and CB₂ on lymphocytes and other immune cells [67–69] stimulated extensive studies on the importance of the endocannabinoid system in immunity (reviewed in [70]) and also in lymphoid malignancies. Gene expression profiling of a malignant lymphoma arising from B lymphocytes, mantle cell lymphoma (MCL), demonstrated high expression of CB₁ [38,39] and CB₂ [39] in the tumor compared to reactive lymphoid tissue. Targeting of the CB-receptors by agonists induced cell death in MCL tumor cell lines and primary MCL cells [71] while normal B lymphocytes from tonsil or peripheral blood were spared [72]. Both CB₁ and CB₂ induced p38 MAPK activation, de novo ceramide synthesis and participated in the signaling pathway to apoptosis [72]. However, in lymphoid malignancies emanating from T lymphocytes, such as T lymphoblastic leukemia, cannabinoids can exert their effects by targeting CB₂ only [73–75]. THC induces CB₂ dependent p38 MAPK activation and apoptosis in the T cell leukemia line Jurkat at 2 h [73]. However, at other culture conditions, THC induced up-regulation of CB₁ receptor mRNA in Jurkat cells. THC could then, via CB₁ and CB₂, inhibit ERK-signaling, induce translocation of Bad to mitochondria and cause apoptosis at 12 h [64].

Tumors depend on the formation of new vessels from pre-existing vasculature (angiogenesis) to grow beyond a size of a few millimeters. Many cancers can therefore produce pro-angiogenic factors such as vascular endothelial growth factor, VEGF, in response to hypoxia. In addition to their direct growth suppressing and pro-apoptotic effects on tumor cells, cannabinoids can inhibit angiogenesis via effects on production of pro-angiogenic factors by cancer cells or by a direct effect on vessel formation *in vivo*. This has been especially well studied in glioma, skin cancer and thyroid cancer. Production of VEGF from these cell lines is inhibited by cannabinoids [53,76]. In addition, cannabinoids can directly target the tumor vasculature. Primary endothelial cells express CB₁ and CB₂ [77–79] and are highly sensitive to apoptotic induction by cannabinoids at low nM doses [77]. Cannabinoids also inhibit bFGF induced endothelial cell proliferation, tube formation and sprouting and induces apoptosis in endothelium *in vitro* and *in vivo* by acting on CB₁ [79]. Experiments *in vivo*, using xenotransplanted glioma show that vessels have different morphology and permeability after treatment with a selective CB₂ agonist [77]. In a pilot clinical study, diminished production of VEGF and reduced activation/expression of VEGF-2 receptor was reported in patients receiving intracranial THC as part of the previously mentioned clinical study on glioblastoma multiforme [53].

6. Growth promoting effects by cannabinoids/endocannabinoids in cancer

When exploring the therapeutic potential of cannabinoids in cancer, also the possible tumor stimulating effects have to

be considered. In fact there are a few reports suggesting that cannabinoids may have pro-proliferative effects in cancer. In various cancer cell lines, representing lung cancer, squamous cell carcinoma, bladder carcinoma, glioblastoma, astrocytoma and kidney cancer, cannabinoids such as THC, AEA and WIN induced transactivation of the EGF-receptor by metalloprotease mediated cleavage of growth factor precursors [80]. These effects were seen at 1/10 of the pro-apoptotic concentration, i.e. at sub- μ M doses of THC, concentrations that may occur during intermittent treatment with a drug [80]. In various hematopoietic and lymphoid cell lines, dependent on growth factors such as IL-3 or IL-6, sub- μ M doses of AEA [81,82], MAEA, and free AA potentiated growth factor induced proliferation at low serum conditions. This effect was not mediated via cannabinoid receptors but involved a CB₁/CB₂ independent stimulation of p42/p44 MAPK [82]. However, in other lymphoid cell lines or in primary lymphoma of the mantle cell type cannabinoids did not promote spontaneous [71] or CD40 mediated proliferation (Flygare, Eriksson and Sander unpublished observations).

Since cannabinoids can suppress cell mediated and humoral immune responses [70], effects on tumor immunity have to be taken into account when considering targeting the cannabinoid system *in vivo*. If tumors express CB-receptors, both tumors and immune cells are targeted by receptor agonists with inhibitory effects on tumor growth and metastasis in xenograft models ([12,33,43,48,50,52–55,58,75–77,79,83–85]. Similar mechanisms operate in inflammatory disorders [86]. If, however, the cancer cells do not express CB-receptors, they have been shown to be relatively resistant to the effects of cannabinoids [87]. Administration of cannabinoids, such as THC, to mice transplanted with cancers lacking CB-receptors may promote *in vivo* cancer growth through suppression of the anti-tumor immune response [87].

7. Anti-cancer effects of the CB₁ antagonist SR141716A

The CB₁ receptor ligand SR141716A was introduced in the mid-1990s [88] and its potent and selective CB₁ receptor antagonist activity has been of tremendous value in cannabinoid research. In some experiments it has been noted that SR141716A not only has antagonistic capacities and inhibit the effects of CB₁ agonists, but in fact has effects *opposite* of those produced by agonists. One explanation for such phenomena could be that the CB₁ receptor has a low, basal signaling capacity even in the absence of agonist and that this effect is blocked by SR141716A that thus behaves as an inverse agonist (reviewed in [89]). SR141617A (Rimonabant/Acomplia) is now used as treatment for obesity and the metabolic syndrome. In experimental settings SR141716A has a direct effect on adipose tissue and reduces proliferation of adipocytes via inhibiting p42/44 MAPK activity [90].

In various cancers SR141716A in the nM–low μ M range reverts the effect of CB-receptor agonists *in vivo* and *in vitro*. These potent antagonizing effects may cause concern whether treatment with CB-receptor antagonists in some instances could enhance cancer proliferation (reviewed in [91]). However, such effects have not been described. When used on various cancer

cell lines *in vitro*, SR141716A either antagonized the anti-cancer effects of cannabinoids or had no reported stimulatory effect on cell proliferation or viability. In fact, significant growth inhibiting effects of μM doses of SR141716A on breast cancer, colon carcinoma and thyroid cancer cell lines [56,33] and on primary cells and cell-lines from malignant lymphoma have been reported [71]. The anti-tumor effects of low doses of SR141716A in breast cancer was mediated through CB₁ and was associated with inhibition of signaling through ERK, down-regulation of cyclin D1 and cell cycle arrest [92]. Importantly, SR141716A has also been reported to reduce tumor growth in xenograft models [92]. Together, these findings provide evidence that CB₁ antagonists may have a complex mechanism of action that can be difficult to predict, even when based on well performed earlier experimental studies.

8. Effects independent of cannabinoid receptors in cancer

In addition to their CB-receptor mediated effects, the endocannabinoids, and in particular AEA, can mediate various CB-receptor independent signaling effects via the TRPV1 receptor [93,94,100] as discussed above. In fact, signaling through cannabinoid receptors have in some instances been found to protect cancer cells against TRPV1 mediated cell death [93,94]. It has also been suggested that AEA induce receptor-independent cell death by interacting with cholesterol rich membrane domains, so-called lipid rafts. This was the case in cholangiocarcinoma where AEA inhibited proliferation and induced apoptosis by a CB₁/CB₂/TRPV1 independent pathway involving lipid rafts, ceramide accumulation and activation of death receptor pathways [95]. As discussed earlier, AEA and other cannabinoids may interact with the COX and LOX pathways. This may explain some apparently conflicting results, such as in animal models of lung cancer where MAEA has been reported both to promote and inhibit metastasis [76,96]. In one of these studies MAEA stimulated cancer cell proliferation in a CB₁/CB₂ receptor independent manner *in vitro* and *in vivo* via induction of COX-2 and increased production of prostaglandins [96]. However, a 10-fold lower dose of MAEA in the same syngenic lung cancer model instead reduced the frequency of lung metastases in a CB₁ dependent way [76].

9. Selective effect of cannabinoids in cancer cells while normal cells are spared

As discussed above, there is growing evidence that cannabinoids may selectively target tumor cells while normal cells are less sensitive. A few possible underlying mechanisms for this desired effect have been suggested recently. In some instances there might be a differential use of signaling pathways in transformed cells. One signaling pathway that has been reported to be differentially regulated by cannabinoids in normal cells versus cancer is the RAS-MAPK/ERK pathway in brain cells [50]. The responses of glioma cells and astrocytes exposed to THC are completely different. THC induces ceramide synthesis and cell death in glioma cells but not in astrocytes which

are instead protected from oxidative stress by cannabinoids in a CB₁-mediated manner [97]. In other cancers the selective response to cannabinoids might reflect qualitative or quantitative differences in expression of cannabinoid receptors (Fig. 2) [38,39,41,52,59,72,83,84] or FAAH [98]. In malignancies, such as thyroid cancer, lymphoma, melanoma, pancreas and breast cancer, the levels of cannabinoid receptors are often higher in the tumor compared to normal cells of the same origin (Fig. 2), resulting in increased sensitivity to cannabinoids in the malignancies [38,39,41,52,59,72,83,84]. Similarly, anti-proliferative and pro-apoptotic effects of cannabinoids on tumor cells and not on normal tissue have been reported in animal studies [54,84].

There are also interesting experiments suggesting that malignant cells may respond differently to cannabinoids depending on their state of differentiation. The colon cancer cell line CaCo₂ starts to differentiate when reaching confluence. In undifferentiated cells cannabinoids were strongly anti-proliferative via acting on CB₁. However, there was no effect on proliferation in differentiated cells. Intriguingly, while the overall levels of CB₁ did not change after differentiation, an alteration in CB₁ glycosylation was suggested and possibly affected cell signaling [31].

10. Regulation of cannabinoid receptor expression in cancer

The different response of normal and malignant cells to cannabinoids and the abnormal expression of CB-receptors in cancer compared to normal tissue (Fig. 2) calls for further research on the regulation of cannabinoid receptors. This is also of importance when considering treating primary cancers since many (but not all, as discussed above) of the effects of cannabinoids are mediated through CB-receptors. There are a few studies that investigate how expression of CB-receptors may vary within well-defined cancer subtypes. It has been difficult to find really good and specific antibodies for immunohistochemical staining and therefore some assays of tissue expression levels have been made by PCR-methods or immunoblot, which give limited information concerning cell types that express the receptors *in vivo*. Still a very interesting picture has emerged. Analyses of CB₂ expression in astrocytoma by PCR demonstrated that 70% of tumors expressed CB₁ and/or CB₂ [55]. In another study most of the brain tumors expressed CB₁ and 50% of tumors expressed CB₂ mRNA [42]. Similar findings were reported when assaying CB₂ levels in adult and pediatric brain tumors [99]. In primary breast cancer CB₁ mRNA levels varied by a factor of 30 and many breast cancer expressed lower levels of CB₁ than normal breast tissue. In contrast most breast cancers had higher expression of CB₂ mRNA than normal breast [41]. Also in pancreatic cancer there seemed to be a large variation in expression of CB-receptors among primary cancers [84] while there was less variation in uterine cervical cancer [94]. From these studies it can be concluded that while a majority of cancers express CB-receptors, a substantial fraction of tumor tissue seem to express very low receptor levels. The findings are still more intriguing if the mixed composition of tumor tissue is taken into account and it could be hypothesized that

the tumor microenvironment may regulate CB-receptor expression. Is there any evidence in support of such a hypothesis? The promoter regions of the CB₁ receptor in mouse and man have recently been described [101,102]. At present there is however only limited knowledge on the regulation of CB-receptor expression in tumor tissue. Some knowledge can instead be gained from the situation in normal cells: in neuronal cells, expressing cannabinoid receptors, exposure to agonists may lead to pharmacological tolerance, desensitization and reduced expression of the receptor at the cell surface [103]. In order to express new receptors, protein synthesis is required [103,104]. Other cell types might react differently and instead up-regulate CB-receptors after agonist stimulation [83,105]. In peripheral blood lymphocytes, higher levels of CB₁ and CB₂ mRNA were seen in response to chronic exposure to cannabinoids [106]. Normal, unstimulated T lymphocytes have been reported to express only a few hundred CB₂ receptors [107]. However, very few receptors might be sufficient to produce significant changes in cellular regulation, since primary T cells are responsive to sub- μ M doses of THC or CB₂ specific agonists [105]. Interestingly, in primary T lymphocytes and the T cell lymphoma lines Jurkat and CEM, stimulation of CB₂ receptors by cannabinoids induced a 10–400-fold increase in CB₁ mRNA expression [105] via a pathway that involved STAT5 activation and induction of IL-4. IL-4 in turn induced CB₁ expression via activation of STAT6 [105]. In immune cells, CB-receptors may also be modulated during stimulation with polyclonal activators or antigen. Also in epithelial cells, such as normal colon epithelium and in the colon cancer cell line HT29, inflammatory stimuli or bacteria can upregulate CB₁ [108]. This suggests that the tumor environment can indeed alter the CB-receptor phenotype in cancer.

A different picture has been described in malignant glioma. Cells with self-renewing capacity, so-called glioma stem cells (tumor stem cells) can be isolated from tumor biopsies and grown *in vitro*, forming three-dimensional aggregates of cells called neurospheres. The cells in these neurospheres expressed CB-receptors and exposure to cannabinoids induced expression of markers characterizing a more differentiated cell stage. Importantly, cannabinoids did not impair the proliferation or the self-renewing capacity of the glioma derived stem cells *in vitro*. However, when the cannabinoid-exposed glioma stem cells were transplanted to animals they exhibited less tumor forming capacity compared to the un-exposed counterparts [109]. These observations give rise to at least two important questions that can be addressed in further experiments: Are “tumor stem cells” in general less sensitive to the anti-proliferative effects of cannabinoids? Are cells that have differentiated in response to cannabinoids still sensitive to the cannabinoid action?

There are yet other levels of regulation of the expression of CB₁. This receptor protein has an unusually long amino-terminal tail that impairs the translocation of the receptor over the ER membrane, resulting in low receptor levels at the cell membrane [110]. However, truncation of part of the amino-terminal has been reported to occur if the receptor is expressed in certain cells. The truncation results in high membrane expression of a truncated form of CB₁ that may have novel features compared to the native CB₁ [111]. It is also clear that different splice variants

of CB₁ exist, at least in the brain [112]. Interestingly, some of these splice variants display different binding and signaling efficacies. This certainly adds to the complexity of the field and will most likely be the focus of interesting future studies.

11. Targeting the endocannabinoid system in cancer—where are we today?

In the now classical review by Hanahan and Weinberg [113] six essential alterations in cell physiology that dictate malignant growth were listed as hallmarks for cancer development; self-sufficiency in growth signals, insensitivity to anti-growth signals, evading apoptosis, limitless replicative potential, sustained angiogenesis and tissue invasion and metastasis. The emerging picture of the role of the endocannabinoid system in cancer indicates that this system is involved in regulating many of these functions that are essential in cancer development. Numerous studies have shown that interference with the endocannabinoid system can inhibit cell growth, induce apoptosis, have effects on cancer stem cells, impair angiogenesis and reduce tissue invasion and metastasis (Table 1). This knowledge has also spurred a clinical trial examining the safety and efficacy of giving THC locally in malignant glioma [14]. However, successful cancer treatment is most often obtained by using combinations of therapies such as surgery, chemotherapy, antihormonal treatment and targeted therapy using antibodies or small molecules such as signal transduction inhibitors. Future studies will clarify if targeting of the endocannabinoid system may be added to this therapeutic arsenal. Apart from the effects discussed above there are additional aspects of the endocannabinoid system that are promising in this respect. Signaling through CB-receptors is coupled to the generation of ceramide, a molecule that is involved in the regulation of cancer growth by mediating anti-proliferative and pro-apoptotic effects. Many anti-cancer drugs also induce cell death by stimulating the generation of ceramide. Attenuation of ceramide levels is a feature of cancer pathogenesis, usually coupled to resistance to apoptosis (reviewed in [114]). Future research should certainly address the question of whether combining chemotherapeutic substances and cannabinoids may have synergistic effects as anti-cancer agents.

Acknowledgements

The authors wish to thank Edvina and Ellinor Koda Sander for the help with the art-works.

References

- [1] Anday JK, Mercier RW. Gene ancestry of the cannabinoid receptor family. *Pharmacol Res* 2005;52:463–6.
- [2] McPartland JM, Matias I, Di Marzo V, Glass M. Evolutionary origins of the endocannabinoid system. *Gene* 2006;370:64–74.
- [3] Devane WA, Hanus L, Breuer A, Pertwee RG, Stevenson LA, Griffin G, et al. Isolation and structure of a brain constituent that binds to the cannabinoid receptor. *Science* 1992;258:1946–9.
- [4] Gerard CM, Mollereau C, Vassart G, Parmentier M. Molecular cloning of a human cannabinoid receptor which is also expressed in testis. *Biochem J* 1991;279(Pt 1):129–34.

- [5] Matsuda LA, Lolait SJ, Brownstein MJ, Young AC, Bonner TI. Structure of a cannabinoid receptor and functional expression of the cloned cDNA. *Nature* 1990;346:561–4.
- [6] Mechoulam R, Ben-Shabat S, Hanus L, Ligumsky M, Kaminski NE, Schatz AR, et al. Identification of an endogenous 2-monoglyceride, present in canine gut, that binds to cannabinoid receptors. *Biochem Pharmacol* 1995;50:83–90.
- [7] Munro S, Thomas KL, Abu-Shaar M. Molecular characterization of a peripheral receptor for cannabinoids. *Nature* 1993;365:61–5.
- [8] Pacher P, Batkai S, Kunos G. The endocannabinoid system as an emerging target of pharmacotherapy. *Pharmacol Rev* 2006;58:389–462.
- [9] Mackie K. Cannabinoid receptors as therapeutic targets. *Annu Rev Pharmacol Toxicol* 2006;46:101–22.
- [10] Abood ME. Molecular biology of cannabinoid receptors. *Handb Exp Pharmacol* 2005;81–115.
- [11] Van Sickle MD, Duncan M, Kingsley PJ, Mouihate A, Urbani P, Mackie K, et al. Identification and functional characterization of brainstem cannabinoid CB2 receptors. *Science* 2005;310:329–32.
- [12] Munson AE, Harris LS, Friedman MA, Dewey WL, Carchman RA. Anti-neoplastic activity of cannabinoids. *J Natl Cancer Inst* 1975;55:597–602.
- [13] Bifulco M, Di Marzo V. Targeting the endocannabinoid system in cancer therapy: a call for further research. *Nat Med* 2002;8:547–50.
- [14] Guzman M, Duarte MJ, Blazquez C, Ravina J, Rosa MC, Galve-Roperh I, et al. A pilot clinical study of Delta9-tetrahydrocannabinol in patients with recurrent glioblastoma multiforme. *Br J Cancer* 2006;95:197–203.
- [15] Bifulco M, Laezza C, Pisanti S, Gazerro P. Cannabinoids and cancer: pros and cons of an antitumour strategy. *Br J Pharmacol* 2006;148:123–35.
- [16] Pertwee RG. Pharmacological actions of cannabinoids. *Handb Exp Pharmacol* 2005:1–51.
- [17] Howlett AC, Qualy JM, Khachatrian LL. Involvement of Gi in the inhibition of adenylate cyclase by cannabimimetic drugs. *Mol Pharmacol* 1986;29:307–13.
- [18] Bouaboula M, Poinot-Chazel C, Bourrie B, Canat X, Calandra B, Rinaldi-Carmona M, et al. Activation of mitogen-activated protein kinases by stimulation of the central cannabinoid receptor CB1. *Biochem J* 1995;312(Pt 2):637–41.
- [19] Mackie K, Hille B. Cannabinoids inhibit N-type calcium channels in neuroblastoma-glioma cells. *Proc Natl Acad Sci USA* 1992;89:3825–9.
- [20] Mackie K, Lai Y, Westenbroek R, Mitchell R. Cannabinoids activate an inwardly rectifying potassium conductance and inhibit Q-type calcium currents in AtT20 cells transfected with rat brain cannabinoid receptor. *J Neurosci* 1995;15:6552–61.
- [21] Guzman M, Sanchez C, Galve-Roperh I. Control of the cell survival/death decision by cannabinoids. *J Mol Med* 2001;78:613–25.
- [22] Guzman M. Cannabinoids: potential anticancer agents. *Nat Rev Cancer* 2003;3:745–55.
- [23] Di Marzo V. 'Endocannabinoids' and other fatty acid derivatives with cannabimimetic properties: biochemistry and possible pathophysiological relevance. *Biochim Biophys Acta* 1998;1392:153–75.
- [24] Jonsson KO, Holt S, Fowler CJ. The endocannabinoid system: current pharmacological research and therapeutic possibilities. *Basic Clin Pharmacol Toxicol* 2006;98:124–34.
- [25] McFarland MJ, Barker EL. Anandamide transport. *Pharmacol Ther* 2004;104:117–35.
- [26] Paradisi A, Oddi S, Maccarrone M. The endocannabinoid system in ageing: a new target for drug development. *Curr Drug Targets* 2006;7:1539–52.
- [27] Matas D, Juknat A, Pietr M, Klin Y, Vogel Z. Anandamide protects from low serum-induced apoptosis via its degradation to ethanolamine. *J Biol Chem* 2007;282:7885–92.
- [28] Furstenberger G, Krieg P, Muller-Decker K, Habenicht AJ. What are cyclooxygenases and lipoxygenases doing in the driver's seat of carcinogenesis? *Int J Cancer* 2006;119:2247–54.
- [29] Kozak KR, Marnett LJ. Oxidative metabolism of endocannabinoids. *Prostaglandins Leukot Essent Fatty Acids* 2002;66:211–20.
- [30] Di Marzo V, Petrosino S. Endocannabinoids and the regulation of their levels in health and disease. *Curr Opin Lipidol* 2007;18:129–40.
- [31] Ligresti A, Bisogno T, Matias I, De Petrocellis L, Cascio MG, Cosenza V, et al. Possible endocannabinoid control of colorectal cancer growth. *Gastroenterology* 2003;125:677–87.
- [32] Pertwee RG. Pharmacology of cannabinoid CB1 and CB2 receptors. *Pharmacol Ther* 1997;74:129–80.
- [33] Bifulco M, Laezza C, Valenti M, Ligresti A, Portella G, Dim V. A new strategy to block tumor growth by inhibiting endocannabinoid inactivation. *FASEB J* 2004;18:1606–8.
- [34] De Lago E, Gustafsson SB, Fernandez-Ruiz J, Nilsson J, Jacobsson SO, Fowler CJ. Acyl-based anandamide uptake inhibitors cause rapid toxicity to C6 glioma cells at pharmacologically relevant concentrations. *J Neurochem* 2006;99:677–88.
- [35] Endsley MP, Aggarwal N, Isbell MA, Wheelock CE, Hammock BD, Falck JR, et al. Diverse roles of 2-arachidonoylglycerol in invasion of prostate carcinoma cells: Location, hydrolysis and 12-lipoxygenase metabolism. *Int J Cancer* 2007;121:984–91.
- [36] Nithipatikom K, Endsley MP, Isbell MA, Falck JR, Iwamoto Y, Hillard CJ, et al. 2-arachidonoylglycerol: a novel inhibitor of androgen-independent prostate cancer cell invasion. *Cancer Res* 2004;64:8826–30.
- [37] Nithipatikom K, Endsley MP, Isbell MA, Wheelock CE, Hammock BD, Campbell WB. A new class of inhibitors of 2-arachidonoylglycerol hydrolysis and invasion of prostate cancer cells. *Biochem Biophys Res Commun* 2005;332:1028–33.
- [38] Ek S, Hogerkerp CM, Dictor M, Ehinger M, Borrebaeck CA. Mantle cell lymphomas express a distinct genetic signature affecting lymphocyte trafficking and growth regulation as compared with subpopulations of normal human B cells. *Cancer Res* 2002;62:4398–405.
- [39] Islam TC, Asplund AC, Lindvall JM, Nygren L, Liden J, Kimby E, et al. High level of cannabinoid receptor 1, absence of regulator of G protein signalling 13 and differential expression of Cyclin D1 in mantle cell lymphoma. *Leukemia* 2003;17:1880–90.
- [40] Alberich Jorda M, Rayman N, Tas M, Verbakel SE, Battista N, van Lom K, et al. The peripheral cannabinoid receptor Cb2, frequently expressed on AML blasts, either induces a neutrophilic differentiation block or confers abnormal migration properties in a ligand-dependent manner. *Blood* 2004;104:526–34.
- [41] Caffarel MM, Sarrio D, Palacios J, Guzman M, Sanchez C. Delta9-tetrahydrocannabinol inhibits cell cycle progression in human breast cancer cells through Cdc2 regulation. *Cancer Res* 2006;66:6615–21.
- [42] Held-Feindt J, Dorner L, Sahan G, Mehdorn HM, Mentlein R. Cannabinoid receptors in human astroglial tumors. *J Neurochem* 2006;98:886–93.
- [43] Casanova ML, Blazquez C, Martinez-Palacio J, Villanueva C, Fernandez-Acenero MJ, Huffman JW, et al. Inhibition of skin tumor growth and angiogenesis in vivo by activation of cannabinoid receptors. *J Clin Invest* 2003;111:43–50.
- [44] Xu X, Liu Y, Huang S, Liu G, Xie C, Zhou J, et al. Overexpression of cannabinoid receptors CB1 and CB2 correlates with improved prognosis of patients with hepatocellular carcinoma. *Cancer Genet Cytogenet* 2006;171:31–8.
- [45] Jacobsson SO, Rongard E, Stridh M, Tiger G, Fowler CJ. Serum-dependent effects of tamoxifen and cannabinoids upon C6 glioma cell viability. *Biochem Pharmacol* 2000;60:1807–13.
- [46] Wiig H, Gyenge CC, Tenstad O. The interstitial distribution of macromolecules in rat tumours is influenced by the negatively charged matrix components. *J Physiol* 2005;567:557–67.
- [47] Jacobsson SO, Wallin T, Fowler CJ. Inhibition of rat C6 glioma cell proliferation by endogenous and synthetic cannabinoids. Relative involvement of cannabinoid and vanilloid receptors. *J Pharmacol Exp Ther* 2001;299:951–9.
- [48] Ligresti A, Moriello AS, Starowicz K, Matias I, Pisanti S, De Petrocellis L, et al. Antitumor activity of plant cannabinoids with emphasis on the effect of cannabidiol on human breast carcinoma. *J Pharmacol Exp Ther* 2006;318:1375–87.
- [49] Gomez del Pulgar T, Velasco G, Sanchez C, Haro A, Guzman M. De novo-synthesized ceramide is involved in cannabinoid-induced apoptosis. *Biochem J* 2002;363:183–8.
- [50] Gomez Del Pulgar T, De Ceballos ML, Guzman M, Velasco G. Cannabinoids protect astrocytes from ceramide-induced apoptosis through the

- phosphatidylinositol 3-kinase/protein kinase B pathway. *J Biol Chem* 2002;277:36527–33.
- [51] McAllister SD, Chan C, Taft RJ, Luu T, Abood ME, Moore DH, et al. Cannabinoids selectively inhibit proliferation and induce death of cultured human glioblastoma multiforme cells. *J Neurooncol* 2005;74:31–40.
- [52] Blazquez C, Carracedo A, Barrado L, Real PJ, Fernandez-Luna JL, Velasco G, et al. Cannabinoid receptors as novel targets for the treatment of melanoma. *FASEB J* 2006;20:2633–5.
- [53] Blazquez C, Gonzalez-Feria L, Alvarez L, Haro A, Casanova ML, Guzman M. Cannabinoids inhibit the vascular endothelial growth factor pathway in gliomas. *Cancer Res* 2004;64:5617–23.
- [54] Galve-Roperh I, Sanchez C, Cortes ML, del Pulgar TG, Izquierdo M, Guzman M. Anti-tumoral action of cannabinoids: involvement of sustained ceramide accumulation and extracellular signal-regulated kinase activation. *Nat Med* 2000;6:313–9.
- [55] Sanchez C, de Ceballos ML, del Pulgar TG, Rueda D, Corbacho C, Velasco G, et al. Inhibition of glioma growth in vivo by selective activation of the CB(2) cannabinoid receptor. *Cancer Res* 2001;61:5784–9.
- [56] De Petrocellis L, Melck D, Palmisano A, Bisogno T, Laezza C, Bifulco M, et al. The endogenous cannabinoid anandamide inhibits human breast cancer cell proliferation. *Proc Natl Acad Sci USA* 1998;95:8375–80.
- [57] Melck D, De Petrocellis L, Orlando P, Bisogno T, Laezza C, Bifulco M, et al. Suppression of nerve growth factor Trk receptors and prolactin receptors by endocannabinoids leads to inhibition of human breast and prostate cancer cell proliferation. *Endocrinology* 2000;141:118–26.
- [58] Grimaldi C, Pisanti S, Laezza C, Malfitano AM, Santoro A, Vitale M, et al. Anandamide inhibits adhesion and migration of breast cancer cells. *Exp Cell Res* 2006;312:363–73.
- [59] Sarfaraz S, Afaq F, Adhami VM, Mukhtar H. Cannabinoid receptor as a novel target for the treatment of prostate cancer. *Cancer Res* 2005;65:1635–41.
- [60] Mimeault M, Pommery N, Watzet N, Bailly C, Henichart JP. Anti-proliferative and apoptotic effects of anandamide in human prostatic cancer cell lines: implication of epidermal growth factor receptor down-regulation and ceramide production. *Prostate* 2003;56:1–12.
- [61] Sarfaraz S, Afaq F, Adhami VM, Malik A, Mukhtar H. Cannabinoid receptor agonist-induced apoptosis of human prostate cancer cells LNCaP proceeds through sustained activation of ERK1/2 leading to G1 cell cycle arrest. *J Biol Chem* 2006;281:39480–91.
- [62] Greenhough A, Patsos HA, Williams AC, Paraskeva C. The cannabinoid delta(9)-tetrahydrocannabinol inhibits RAS-MAPK and PI3K-AKT survival signalling and induces BAD-mediated apoptosis in colorectal cancer cells. *Int J Cancer* 2007.
- [63] Ellert-Miklaszewska A, Kaminska B, Konarska L. Cannabinoids down-regulate PI3K/Akt and Erk signalling pathways and activate proapoptotic function of Bad protein. *Cell Signal* 2005;17:25–37.
- [64] Jia W, Hegde VL, Singh NP, Sisco D, Grant S, Nagarkatti M, et al. Delta9-tetrahydrocannabinol-induced apoptosis in Jurkat leukemia T cells is regulated by translocation of Bad to mitochondria. *Mol Cancer Res* 2006;4:549–62.
- [65] Valk PJ, Hol S, Vankan Y, Ihle JN, Askew D, Jenkins NA, et al. The genes encoding the peripheral cannabinoid receptor and alpha-L-fucosidase are located near a newly identified common virus integration site, Evi1. *J Virol* 1997;71:6796–804.
- [66] Derocq JM, Jbilo O, Bouaboula M, Segui M, Clere C, Casellas P. Genomic and functional changes induced by the activation of the peripheral cannabinoid receptor CB2 in the promyelocytic cells HL-60. Possible involvement of the CB2 receptor in cell differentiation. *J Biol Chem* 2000;275:15621–8.
- [67] Bouaboula M, Rinaldi M, Carayon P, Carillon C, Delpech B, Shire D, et al. Cannabinoid-receptor expression in human leukocytes. *Eur J Biochem* 1993;214:173–80.
- [68] Galiegue S, Mary S, Marchand J, Dussossoy D, Carriere D, Carayon P, et al. Expression of central and peripheral cannabinoid receptors in human immune tissues and leukocyte subpopulations. *Eur J Biochem* 1995;232:54–61.
- [69] Kaminski NE, Abood ME, Kessler FK, Martin BR, Schatz AR. Identification of a functionally relevant cannabinoid receptor on mouse spleen cells that is involved in cannabinoid-mediated immune modulation. *Mol Pharmacol* 1992;42:736–42.
- [70] Klein TW, Newton C, Larsen K, Lu L, Perkins I, Nong L, et al. The cannabinoid system and immune modulation. *J Leukoc Biol* 2003;74:486–96.
- [71] Flygare J, Gustafsson K, Kimby E, Christensson B, Sander B. Cannabinoid receptor ligands mediate growth inhibition and cell death in mantle cell lymphoma. *FEBS Lett* 2005;579:6885–9.
- [72] Gustafsson K, Christensson B, Sander B, Flygare J. Cannabinoid receptor-mediated apoptosis induced by R(+)-methanandamide and Win55, 212-2 is associated with ceramide accumulation and p38 activation in mantle cell lymphoma. *Mol Pharmacol* 2006;70:1612–20.
- [73] Herrera B, Carracedo A, Diez-Zaera M, Gomez del Pulgar T, Guzman M, Velasco G. The CB2 cannabinoid receptor signals apoptosis via ceramide-dependent activation of the mitochondrial intrinsic pathway. *Exp Cell Res* 2006;312:2121–31.
- [74] Herrera B, Carracedo A, Diez-Zaera M, Guzman M, Velasco G. p38 MAPK is involved in CB2 receptor-induced apoptosis of human leukaemia cells. *FEBS Lett* 2005;579:5084–8.
- [75] McKallip RJ, Lombard C, Fisher M, Martin BR, Ryu S, Grant S, et al. Targeting CB2 cannabinoid receptors as a novel therapy to treat malignant lymphoblastic disease. *Blood* 2002;100:627–34.
- [76] Portella G, Laezza C, Laccetti P, De Petrocellis L, Di Marzo V, Bifulco M. Inhibitory effects of cannabinoid CB1 receptor stimulation on tumor growth and metastatic spreading: actions on signals involved in angiogenesis and metastasis. *FASEB J* 2003;17:1771–3.
- [77] Blazquez C, Casanova ML, Planas A, Del Pulgar TG, Villanueva C, Fernandez-Acenero MJ, et al. Inhibition of tumor angiogenesis by cannabinoids. *FASEB J* 2003;17:529–31.
- [78] Liu J, Gao B, Mirshahi F, Sanyal AJ, Khanolkar AD, Makriyannis A, et al. Functional CB1 cannabinoid receptors in human vascular endothelial cells. *Biochem J* 2000;346(Pt 3):835–40.
- [79] Pisanti S, Borselli C, Oliviero O, Laezza C, Gazerro P, Bifulco M. Antiangiogenic activity of the endocannabinoid anandamide: correlation to its tumor-suppressor efficacy. *J Cell Physiol* 2007;211:495–503.
- [80] Hart S, Fischer OM, Ullrich A. Cannabinoids induce cancer cell proliferation via tumor necrosis factor alpha-converting enzyme (TACE/ADAM17)-mediated transactivation of the epidermal growth factor receptor. *Cancer Res* 2004;64:1943–50.
- [81] Valk P, Verbakel S, Vankan Y, Hol S, Mancham S, Ploemacher R, et al. Anandamide, a natural ligand for the peripheral cannabinoid receptor is a novel synergistic growth factor for hematopoietic cells. *Blood* 1997;90:1448–57.
- [82] Derocq JM, Bouaboula M, Marchand J, Rinaldi-Carmona M, Segui M, Casellas P. The endogenous cannabinoid anandamide is a lipid messenger activating cell growth via a cannabinoid receptor-independent pathway in hematopoietic cell lines. *FEBS Lett* 1998;425:419–25.
- [83] Bifulco M, Laezza C, Portella G, Vitale M, Orlando P, De Petrocellis L, et al. Control by the endogenous cannabinoid system of ras oncogene-dependent tumor growth. *FASEB J* 2001;15:2745–7.
- [84] Carracedo A, Gironella M, Lorente M, Garcia S, Guzman M, Velasco G, et al. Cannabinoids induce apoptosis of pancreatic tumor cells via endoplasmic reticulum stress-related genes. *Cancer Res* 2006;66:6748–55.
- [85] Carracedo A, Lorente M, Egia A, Blazquez C, Garcia S, Giroux V, et al. The stress-regulated protein p8 mediates cannabinoid-induced apoptosis of tumor cells. *Cancer Cell* 2006;9:301–12.
- [86] Maresz K, Pryce G, Ponomarev ED, Marsicano G, Croxford JL, Shriver LP, et al. Direct suppression of CNS autoimmune inflammation via the cannabinoid receptor CB1 on neurons and CB2 on autoreactive T cells. *Nat Med* 2007;13:492–7.
- [87] McKallip RJ, Nagarkatti M, Nagarkatti PS. Delta-9-tetrahydrocannabinol enhances breast cancer growth and metastasis by suppression of the anti-tumor immune response. *J Immunol* 2005;174:3281–9.
- [88] Rinaldi-Carmona M, Barth F, Heaulme M, Shire D, Calandra B, Congy C, et al. SR141716A, a potent and selective antagonist of the brain cannabinoid receptor. *FEBS Lett* 1994;350:240–4.

- [89] Pertwee RG. Inverse agonism and neutral antagonism at cannabinoid CB1 receptors. *Life Sci* 2005;76:1307–24.
- [90] Gary-Boho M, Elachouri G, Scatton B, Le Fur G, Oury-Donat F, Bensaïd M. The cannabinoid CB1 receptor antagonist rimonabant (SR141716) inhibits cell proliferation and increases markers of adipocyte maturation in cultured mouse 3T3 F442A preadipocytes. *Mol Pharmacol* 2006;69:471–8.
- [91] Bifulco M, Grimaldi C, Gazzero P, Pisanti S, Santoro A. Rimonabant: just an antiobesity drug? Current evidence on its pleiotropic effects. *Mol Pharmacol* 2007;71:1445–56.
- [92] Sarnataro D, Pisanti S, Santoro A, Gazzero P, Malfitano AM, Laezza C, et al. The cannabinoid CB1 receptor antagonist rimonabant (SR141716) inhibits human breast cancer cell proliferation through a lipid raft-mediated mechanism. *Mol Pharmacol* 2006;70:1298–306.
- [93] Maccarrone M, Lorenzon T, Bari M, Melino G, Finazzi-Agro A. Anandamide induces apoptosis in human cells via vanilloid receptors. Evidence for a protective role of cannabinoid receptors. *J Biol Chem* 2000;275:31938–45.
- [94] Contassot E, Tenan M, Schnuriger V, Pelte MF, Dietrich PY. Arachidonyl ethanolamide induces apoptosis of uterine cervix cancer cells via aberrantly expressed vanilloid receptor-1. *Gynecol Oncol* 2004;93:182–8.
- [95] DeMorrow S, Glaser S, Francis H, Venter J, Vaculin B, Vaculin S, et al. Opposing actions of endocannabinoids on cholangiocarcinoma growth: recruitment of Fas and Fas ligand to lipid rafts. *J Biol Chem* 2007;282:13098–113.
- [96] Gardner B, Zhu LX, Sharma S, Tashkin DP, Dubinett SM. Methanandamide increases COX-2 expression and tumor growth in murine lung cancer. *FASEB J* 2003;17:2157–9.
- [97] Carracedo A, Geelen MJ, Diez M, Hanada K, Guzman M, Velasco G. Ceramide sensitizes astrocytes to oxidative stress: protective role of cannabinoids. *Biochem J* 2004;380:435–40.
- [98] Jessani N, Liu Y, Humphrey M, Cravatt BF. Enzyme activity profiles of the secreted and membrane proteome that depict cancer cell invasiveness. *Proc Natl Acad Sci USA* 2002;99:10335–40.
- [99] Ellert-Miklaszewska A, Grajkowska W, Gabrusiewicz K, Kaminska B, Konarska L. Distinctive pattern of cannabinoid receptor type II (CB2) expression in adult and pediatric brain tumors. *Brain Res* 2007;1137:161–9.
- [100] Contassot E, Wilmotte R, Tenan M, Belkouch MC, Schnuriger V, de Tribolet N, et al. Arachidonyl ethanolamide induces apoptosis of human glioma cells through vanilloid receptor-1. *J Neuropathol Exp Neurol* 2004;63:956–63.
- [101] McCaw EA, Hu H, Gomez GT, Hebb AL, Kelly ME, Denovan-Wright EM. Structure, expression and regulation of the cannabinoid receptor gene (CB1) in Huntington's disease transgenic mice. *Eur J Biochem* 2004;271:4909–20.
- [102] Zhang PW, Ishiguro H, Ohtsuki T, Hess J, Carillo F, Walther D, et al. Human cannabinoid receptor 1: 5' exons, candidate regulatory regions, polymorphisms, haplotypes and association with polysubstance abuse. *Mol Psychiatry* 2004;9:916–31.
- [103] Hsieh C, Brown S, Derleth C, Mackie K. Internalization and recycling of the CB1 cannabinoid receptor. *J Neurochem* 1999;73:493–501.
- [104] Lefkowitz RJ, Whalen EJ. beta-arrestins: traffic cops of cell signaling. *Curr Opin Cell Biol* 2004;16:162–8.
- [105] Borner C, Holt V, Sebald W, Kraus J. Transcriptional regulation of the cannabinoid receptor type 1 gene in T cells by cannabinoids. *J Leukoc Biol* 2007;81:336–43.
- [106] Nong L, Newton C, Cheng Q, Friedman H, Roth MD, Klein TW. Altered cannabinoid receptor mRNA expression in peripheral blood mononuclear cells from marijuana smokers. *J Neuroimmunol* 2002;127:169–76.
- [107] Schatz AR, Lee M, Condie RB, Pulaski JT, Kaminski NE. Cannabinoid receptors CB1 and CB2: a characterization of expression and adenylate cyclase modulation within the immune system. *Toxicol Appl Pharmacol* 1997;142:278–87.
- [108] Rousseaux C, Thuru X, Gelot A, Barnich N, Neut C, Dubuquoy L, et al. *Lactobacillus acidophilus* modulates intestinal pain and induces opioid and cannabinoid receptors. *Nat Med* 2007;13:35–7.
- [109] Aguado T, Carracedo A, Julien B, Velasco G, Milman G, Mechoulam R, et al. Cannabinoids induce glioma stem-like cell differentiation and inhibit gliomagenesis. *J Biol Chem* 2007;282:6854–62.
- [110] Andersson H, D'Antona AM, Kendall DA, Von Heijne G, Chin CN. Membrane assembly of the cannabinoid receptor 1: impact of a long N-terminal tail. *Mol Pharmacol* 2003;64:570–7.
- [111] Nordstrom R, Andersson H. Amino-terminal processing of the human cannabinoid receptor 1. *J Recept Signal Transduct Res* 2006;26:259–67.
- [112] Ryberg E, Vu HK, Larsson N, Groblewski T, Hjorth S, Elebring T, et al. Identification and characterisation of a novel splice variant of the human CB1 receptor. *FEBS Lett* 2005;579:259–64.
- [113] Hanahan D, Weinberg RA. The hallmarks of cancer. *Cell* 2000;100:57–70.
- [114] Ogretmen B, Hannun YA. Biologically active sphingolipids in cancer pathogenesis and treatment. *Nat Rev Cancer* 2004;4:604–16.
- [115] Petersen G, Moesgaard B, Schmid PC, Schmid HH, Broholm H, Kosteljanetz M, et al. Endocannabinoid metabolism in human glioblastomas and meningiomas compared to human non-tumour brain tissue. *J Neurochem* 2005;93:299–309.
- [116] Maccarrone M, Attina M, Cartoni A, Bari M, Finazzi-Agro A. Gas chromatography-mass spectrometry analysis of endogenous cannabinoids in healthy and tumoral human brain and human cells in culture. *J Neurochem* 2001;76:594–601.
- [117] Pagotto U, Marsicano G, Fezza F, Theodoropoulou M, Grubler Y, Stalla J, et al. Normal human pituitary gland and pituitary adenomas express cannabinoid receptor type 1 and synthesize endogenous cannabinoids: first evidence for a direct role of cannabinoids on hormone modulation at the human pituitary level. *J Clin Endocrinol Metab* 2001;86:2687–96.
- [118] Schmid PC, Wold LE, Krebsbach RJ, Berdyshev EV, Schmid HH. Anandamide and other *N*-acylethanolamines in human tumors. *Lipids* 2002;37:907–12.
- [119] Burstein SH, Hunter SA. Stimulation of anandamide biosynthesis in N-18TG2 neuroblastoma cells by delta 9-tetrahydrocannabinol (THC). *Biochem Pharmacol* 1995;49:855–8.
- [120] Sanchez C, Galve-Roperh I, Canova C, Brachet P, Guzman M. Delta9-tetrahydrocannabinol induces apoptosis in C6 glioma cells. *FEBS Lett* 1998;436:6–10.
- [121] Ramer R, Brune K, Pahl A, Hinz B. R(+)-methanandamide induces cyclooxygenase-2 expression in human neuroglioma cells via a non-cannabinoid receptor-mediated mechanism. *Biochem Biophys Res Commun* 2001;286:1144–52.
- [122] Ramer R, Weinzierl U, Schwind B, Brune K, Hinz B. Ceramide is involved in r(+)-methanandamide-induced cyclooxygenase-2 expression in human neuroglioma cells. *Mol Pharmacol* 2003;64:1189–98.
- [123] Fowler CJ, Jonsson KO, Andersson A, Juntunen J, Jarvinen T, Vandevorde S, et al. Inhibition of C6 glioma cell proliferation by anandamide, 1-arachidonoylglycerol, and by a water soluble phosphate ester of anandamide: variability in response and involvement of arachidonic acid. *Biochem Pharmacol* 2003;66:757–67.
- [124] Melck D, Rueda D, Galve-Roperh I, De Petrocellis L, Guzman M, Di Marzo V. Involvement of the cAMP/protein kinase A pathway and of mitogen-activated protein kinase in the anti-proliferative effects of anandamide in human breast cancer cells. *FEBS Lett* 1999;463:235–40.
- [125] Joseph J, Niggemann B, Zaenker KS, Entschladen F. Anandamide is an endogenous inhibitor for the migration of tumor cells and T lymphocytes. *Cancer Immunol Immunother* 2004;53:723–8.
- [126] Laezza C, Pisanti S, Crescenzi E, Bifulco M. Anandamide inhibits Cdk2 and activates Chk1 leading to cell cycle arrest in human breast cancer cells. *FEBS Lett* 2006;580:6076–82.
- [127] Ruiz L, Miguel A, Diaz-Laviada I. Delta9-tetrahydrocannabinol induces apoptosis in human prostate PC-3 cells via a receptor-independent mechanism. *FEBS Lett* 1999;458:400–4.
- [128] Velasco L, Ruiz L, Sanchez MG, Diaz-Laviada I. delta(9)-Tetrahydrocannabinol increases nerve growth factor production by prostate PC-3 cells. Involvement of CB1 cannabinoid receptor and Raf-1. *Eur J Biochem* 2001;268:531–5.
- [129] Patsos HA, Hicks DJ, Dobson RR, Greenhough A, Woodman N, Lane JD, et al. The endogenous cannabinoid, anandamide, induces cell death

- in colorectal carcinoma cells: a possible role for cyclooxygenase 2. *Gut* 2005;54:1741–50.
- [130] Wright K, Rooney N, Feeney M, Tate J, Robertson D, Welham M, et al. Differential expression of cannabinoid receptors in the human colon: cannabinoids promote epithelial wound healing. *Gastroenterology* 2005;129:437–53.
- [131] Murison G, Chubb CB, Maeda S, Gemmell MA, Huberman E. Cannabinoids induce incomplete maturation of cultured human leukemia cells. *Proc Natl Acad Sci USA* 1987;84:5414–8.
- [132] Jorda MA, Lowenberg B, Delwel R. The peripheral cannabinoid receptor Cb2, a novel oncoprotein, induces a reversible block in neutrophilic differentiation. *Blood* 2003;101:1336–43.